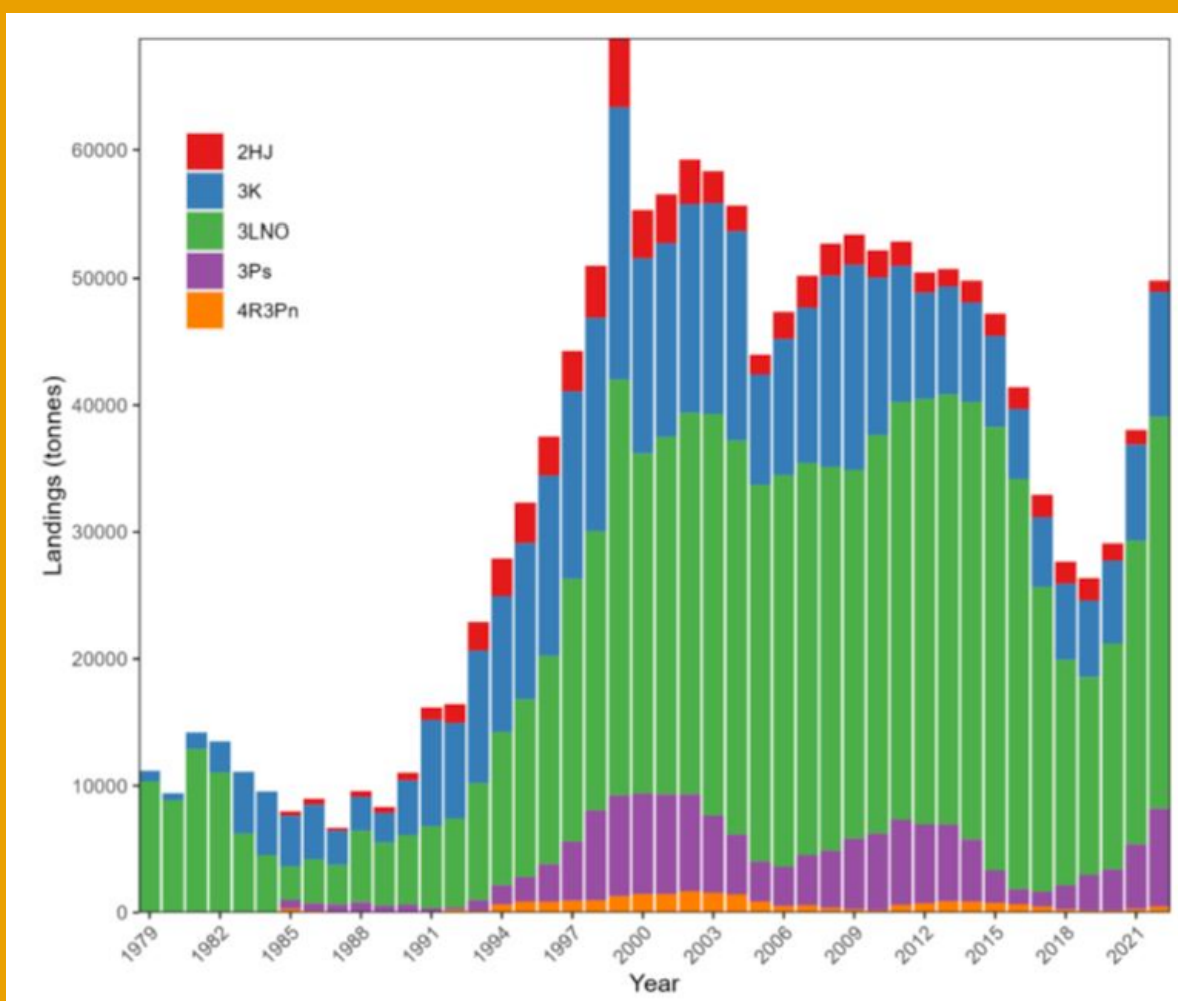


# CRAB STATS

How much is really landed and processed, and how much work does that mean for our province



## QUOTA LEVELS

The NL crab quota peaked in 1999 at 70,000t

2023 Quota = 54,727t

The last time quotas were above this level was in 2004/2005



## PROCESSING PLANT EMPLOYMENT

2005 = 13,758 plant workers

2005 = 32 plant holding crab processing licenses

2021 = 6511 plant workers

2021 = 21 crab plants

\*awaiting most recent employment info from province

